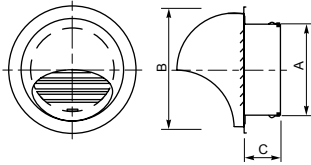




## External Vent Louvers



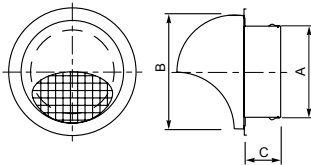
### VLA

- For exhaust and supply.
- Made of stainless steel sheet 304, polishing surface finish.
- With insect screen, lames, fixing clips, rubber sealing.
- Can be applied outside wall as well as inside.
- Packed in a transparent bag, including 2 stainless screws.
- Natural free air circulation.

VLA	A	B	C	
80	75	103	40	36
100	97	133	52	36
125	120	165	52	18
150	145	192	62	12
160	155	192	62	12
180	175	253	65	12
200	195	253	74	12

### VLB

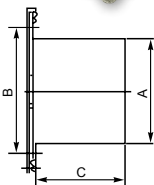
- Made of stainless steel sheet 304, polishing surface finish.
- With protection mesh, fixing clips, rubber sealing.
- Can be applied outside wall as well as inside.
- Packed in a transparent bag, including 2 stainless screw.
- Maximum air passage.



VLB	A	B	C	
80	75	133	40	36
100	97	133	52	36
125	120	165	52	18
150	145	192	62	12
160	155	192	62	12
180	175	253	65	12
200	195	253	74	12

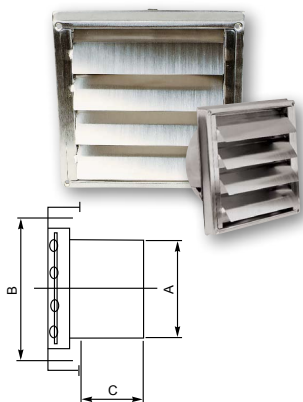
### VLD

- Made of cast aluminium.
- With insect screen, fixing clips.
- Natural free air circulation.
- Classic styling, colour bronze green.
- Available in size: 100, 125, 150, 160mm



SMS	A	B	C	
100	97	137	52	36
125	120	167	52	12
150	145	167	62	12



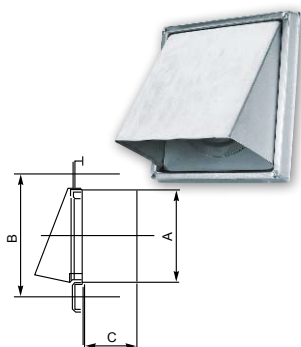


### SMS

- Made of stainless steel sheet 304, polishing surface finish.
- Good adjusting features, quick and easy to install.

SMS	A	B	C	
100	97	137	52	36
125	120	167	52	12
150	145	167	62	12
200*	195	225	62	12

\*The cadre is made of stainless steel 304 profile.



### SUA

- Made of stainless steel sheet 304, polishing surface finish.
- Good adjusting features, quick and easy to install.

SUA	A	B	C	
100	97	137	52	36
125	120	167	52	18
150	145	167	62	18

### SMS-P

- All PVC plastic design.
- Idea for use in clothes dryer, kitchen and bathroom air exhaust.

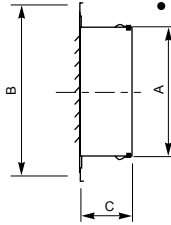
### SUA-P

- All PVC plastic design.
- Idea for use in clothes dryer, kitchen and bathroom air exhaust.



### ELA

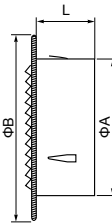
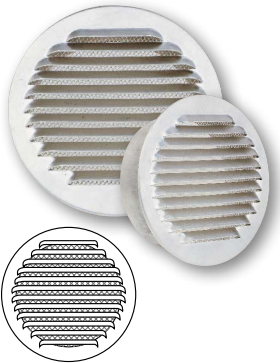
- All stainless steel 304 construction.
- Excellent feature of antirust.
- Come with insect mesh.



ELA	A	B	C
100	97	133	52
125	120	165	52
150	145	192	62
160	155	192	62
200	195	253	62

### ELB

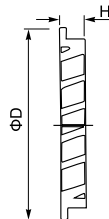
- External louver for air supply and exhaust.
- Made of pressed aluminium.
- Supplied with aluminium mosquito mesh.



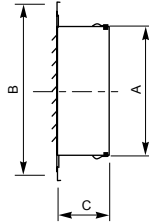
ELB	A	B±2mm	L±5mm
80	80	103	50
100	100	125	50
125	125	150	50
150	150	175	50
160	160	188	50
200	200	225	50
250	250	275	50
315	315	340	50

### ELC

- ELC is mainly used as an intake grille for fresh air.
- ELC is moulded of aluminium.
- It has a round connection which fits directly into the duct.
- The back of the grille is equipped with a stainless steel wire net, as protection against small animals.
- Fixed with screws.



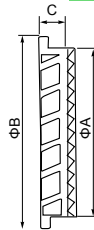
Size	ΦD(mm)	H(mm)	Weight(Kg)
100	125	20	150
125	150	20	180
150	180	18	270
160	185	18	300
200	225	20	400
250	275	20	850
315	350	20	1600
400	440	40	3000



### ELN

- All stainless steel 304 construction.
- Excellent feature of antirust.
- Come with insect mesh.

ELN	A	B	C
100	95	125	52
125	120	160	52
150	145	185	62
160	155	185	62



### SMF

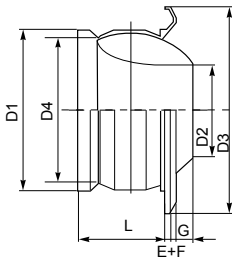
- All stainless steel 304 construction.
- Excellent feature of antirust.
- Come with insect mesh.

SMF	A	B	C
180	120	167	52



## Jet Nozzle JN-S

- The nozzle and the decorative ring are manufactured in aluminium.
- Powder-coated surface finish, standard colour RAL9010, 9016.
- The connection part is made of galvanized steel sheet.
- Long distance air supply with low noise level.
- Used in superior places: concert hall, airport, theatre, museum etc.
- Available in extensive range of size.



Specs	D1	D3	D2	D4	L	E	F	G
100	98	148	60	70	85	8	8	6
125	123	170	64	90	80	8	7	8
160	158	210	85	130	98	9	14	8
200	198	255	108	160	112	8	11	12
250	248	301	136	208	143	10	15	13
315	310	380	186	270	160	9	13	29
400	396	467	230	350	182	11	11	55
500	492	598	290	445	230	8	15	65
630	625	700	295	585	295	25	50	

Specs	The proper diameter of duct						
	200	250	315	500	630	800	1000
100	●						
125		●					
160			●	●	●	●	
200			●	●	●	●	
250			●	●	●	●	
315			●	●	●	●	
400				●	●	●	
500					●	●	●



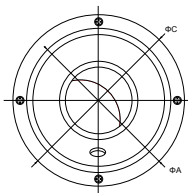


### JN-D

- Made from galvanized steel and aluminium.
- Powder-coated surface finish, standard colour RAL9010, 9016.
- Long distance air supply with low noise.
- Adjustable blade, horizontally or vertically.

## Spherical Diffuser SPD

- Made from aluminium.
- Anodized, or powder-coated surface finish.
- Rotable body can be rotated in any direction off center.
- Air volume is controlled easily with the turn of a knob.
- Available in size: 4, 5, 6, 7, 8, 9 inches.

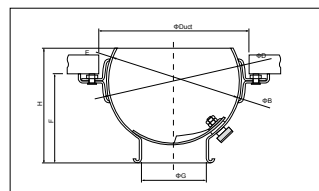
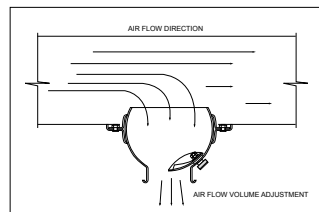


Technical data Dimension data mm

Size	dust size	A	B	C	D	E	F	G	H
SD-4	165	180	150	200	162	30	85	75	116
SD-5	216	230	200	255	212	51	105	106	156
SD-6	280	300	264	325	276	75	130	140	206
SD-7	318	335	302	365	314	70	150	165	220
SD-8	318	335	302	365	314	70	150	190	220
SD-9	366	390	348	420	360	85	180	216	275
SD-10	400	455	381	490	400	72	191	230	263

Air Flow data volume(m<sup>3</sup>/h)

Size	Speed(m/s)	2	3	4	5	6	7	8	9
SD-4	32	46	64	90	95	111	127	143	
SD-5	66	99	132	165	198	231	264	297	
SD-6	111	166	221	277	333	368	444	499	
SD-7	154	231	308	365	462	520	616	693	
SD-8	204	306	408	509	611	713	815	917	
SD-9	264	396	528	660	762	923	1055	1187	
SD-10	299	449	598	748	897	1047	1196	1346	

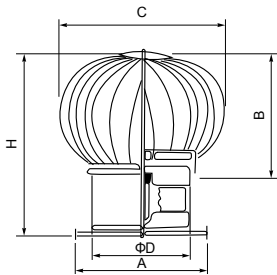




## Turbovent Rotary Chimney Cowl TB



- Base made of galvanized steel, cap made of stainless steel or aluminium sheet
- For roof and chimney application
- NSK bearing, with high-temperature oil
- Power free and greatly improve the natural ventilation.
- With or without square base



ΦD/mm	A/mm	B/mm	C/mm	H/mm	Vane
150	200	160	260	270	16
200	250	220	300	300	18
250	300	230	320	310	18
300	350	250	350	330	22