

## Testing Manifold



### **CT-601-R134A Brass testing manifold for R134A**

with hook, hose holder and two end handwheels.

#### **Testing Manifold Set for R134A**

includes item No CT-601-R134A, 3 Pcs Charging Hose and 2 Pcs 2-3/4" dia. Gauge.

**CT-636G-R134A** With 3pcs 36" hoses for R134A.

**CT-660G-R134A** With 3pcs 60" hoses for R134A.

**CT-672G-R134A** With 3pcs 72" hoses for R134A.



### **CT-501-R134A Brass testing manifold for R134A**

with hook, hose holder and two end handwheels.

(With sight glass)

#### **Testing Manifold Set for R134A**

includes item No CT-501-R134A, 3 Pcs Charging Hose and 2 Pcs 2-3/4" dia. Gauge.

**CT-536G-R134A** With 3pcs 36" hoses for R134A.

**CT-560G-R134A** With 3pcs 60" hoses for R134A.

**CT-572G-R134A** With 3pcs 72" hoses for R134A.



### **CT-601-R410A Brass testing manifold for R410A**

with hook, hose holder and two end handwheels.

#### **Testing Manifold Set for R410A**

includes item No CT-601-R410A, 3 Pcs Charging Hose and 2 Pcs 2-3/4" dia. Gauge.

**CT-636G-R410A** With 3pcs 36" hoses for R410A.

**CT-660G-R410A** With 3pcs 60" hoses for R410A.

**CT-672G-R410A** With 3pcs 72" hoses for R410A.



### **CT-501-R410A Brass testing manifold for R410A**

with hook, hose holder and two end handwheels.

(With sight glass)

#### **Testing Manifold Set for R410A**

includes item No CT-501-R410A, 3 Pcs Charging Hose and 2 Pcs 2-3/4" dia. Gauge.

**CT-536G-R410A** With 3pcs 36" hoses for R410A.

**CT-560G-R410A** With 3pcs 60" hoses for R410A.

**CT-572G-R410A** With 3pcs 72" hoses for R410A.



**Brass testing manifold  
for R404A, R407A, R134A and R22**

with hook, hose holder  
and two end handwheels.

**Testing Manifold Set for R404A,  
R407A, R134A and R22**

includes item No CT-A601,  
3 Pcs Charging Hose and  
2 Pcs 2-3/4" dia. Gauge.

**CT-A636-G** With 3pcs 36" hoses.

**CT-A660-G** With 3pcs 60" hoses.

**CT-A672-G** With 3pcs 72" hoses.



**CT-A501 Brass testing manifold  
for R404A, R407A, R134A and R22**

with hook, hose holder and two end  
handwheels. (With sight glass)

**Testing Manifold Set for R404A, R407A,  
R134A and R22**

includes item No CT-A501,  
3 Pcs Charging Hose and  
2 Pcs 2-3/4" dia. Gauge.

**CT-A536-G** With 3pcs 36" hoses.

**CT-A560-G** With 3pcs 60" hoses.

**CT-A572-G** With 3pcs 72" hoses.

All hoses are designed for working Pressure 800psi  
Bursting Pressure 4000psi



**CT-601 Brass testing manifold  
for R12, R22, R502**

with hook, hose holder  
and two end handwheels.

**Testing Manifold Set for R12,  
R22, R502**

includes item No CT-601,  
3 Pcs Charging Hose and  
2 Pcs 2-3/4" dia. Gauge.

**CT-636-G** With 3pcs 36" hoses.

**CT-660-G** With 3pcs 60" hoses.

**CT-672-G** With 3pcs 72" hoses.



**CT-501 Brass testing manifold  
for R12, R22, R502**

with hook, hose holder  
and two end handwheels.

(With sight glass)

**Testing Manifold Set for R12,  
R22, R502**

includes item No CT-501,  
3 Pcs Charging Hose and  
2 Pcs 2-3/4" dia. Gauge.

**CT-536-G** With 3pcs 36" hoses.

**CT-560-G** With 3pcs 60" hoses.

**CT-572-G** With 3pcs 72" hoses.



### Testing Manifold Set for R134A

Manifold with 3pcs hoses, 2pcs  
 QC-12 quick couplers and 2pcs  
 2-3/4" dia. Gauge, 1/4" SAE  
 connection.

- CT-S36G** With 3pcs 36" hoses for R134A
- CT-S60G** With 3pcs 60" hoses for R134A
- CT-S72G** With 3pcs 72" hoses for R134A



### Testing Manifold Set for R410A

Manifold with 3pcs hoses, 2pcs  
 QC-12 quick couplers and 2pcs  
 2-3/4" dia. Gauge, 1/4" SAE  
 connection.

- CT-S36G-R410A** With 3pcs 36" hoses for R410A
- CT-S60G-R410A** With 3pcs 60" hoses for R410A
- CT-S72G-R410A** With 3pcs 72" hoses for R410A



### Testing Manifold Set for R404A, R407A, R134A and R22

Manifold with 3pcs hoses, 2pcs  
 QC-12 quick couplers and 2pcs  
 2-3/4" dia. Gauge, 1/4" SAE  
 connection.

- CT-AS36G** With 3pcs 36" hoses.
- CT-AS60G** With 3pcs 60" hoses.
- CT-AS72G** With 3pcs 72" hoses.

All hoses are designed for working Pressure 800psi  
 Bursting Pressure 4000psi

## Charging Hose

3 PCS per set



L-length	Working Pressure / Burst		
	500PSI / 2500PSI	600PSI / 3000PSI	800PSI / 4000PSI
36"	CT-336RYB	CT-336ARYB	CT-336HRYB
60"	CT-360RYB	CT-360ARYB	CT-360HRYB
72"	CT-372RYB	CT-372ARYB	CT-372HRYB
90"	CT-396RYB	CT-396ARYB	CT-396HRYB

CT-336RYB-CT-396RYB designed for R12, R22, R502. with connection 1/4" SAE× 1/4" SAE

CT-336ARYB-CT-396ARYB designed for R134A. with connection 1/4" SAE× 1/4" SAE

CT-336HRYB-CT-396HRYB Specially designed for R410A and also excellent for other refrigerants with  
 connection 1/4" SAE× 5/16" SAE

## Testing Unit



### CT-466G Charging and Testing Unit

with 2-3/4" compound  
 gauge.0-30"  
 vacuum, 0-120 lbs  
 pressure



### CT-466GF Charging and Testing Unit

with 2-3/4" Shock-Proof  
 compound gauge.0-30"  
 vacuum, 0-120  
 lbs pressure



### CT-466 Single Gauge Valve

(without gauge)

## High Pressure & Low Pressure Quick Coupler.



QC-SML4 QC-SM44  
**QC-SM** 1/4" SAE



QC-12L QC-12H  
**QC-12** 1/4" SAE



QC-ML QC-MH  
**QC-M** 14mm



QC-14H QC-14L  
**QC-14** 1/4" SAE

## Refrigerant Gauge



### RG-250

Low side 30 vacuum  
 to 250psi, 1/8" NPT  
 connection, blue color,  
 2-3/4" dia. , Scale for R12,  
 R22, R502, °F, psi, kg/  
 cm2.



### RG-500

High side 0 vacuum  
 to 500psi, 1/8" NPT  
 connection, red color,  
 2-3/4" dia. , Scale for R12,  
 R22, R502, °F, psi, kg/  
 m2.



### CH-134L

Low side 30 vacuum  
 to 250psi, 1/8" NPT  
 connection, blue color,  
 2-3/4" dia. , Scale for  
 R134A, °F, psi, kg/cm2.



### CH-134H

High side 0 to 500 psi,  
 1/8" NPT connection, red  
 color, 2-3/4" dia. , Scale for  
 R134A, °F, psi, kg/cm2.



**CH-140**  
Low side 30 vacuum  
to 140psi, 1/8" NPT  
connection, blue color,  
2-3/4" dia. , Scale for R12,  
R22, R502, °C, psi, bar



**CH-400**  
High side 30 vacuum  
to 400psi, 1/8" NPT  
connection, red color,  
2-3/4" dia. , Scale for R12,  
R22, R502, °C, psi, bar



**CH-410A**  
Low side 30 vacuum  
to 500psi, 1/8" NPT  
connection, blue color,  
2-3/4" dia. , Scale for  
R410A, °F, psi, KPA.



**CH-410H**  
High side 0 vacuum  
to 800psi, 1/8" NPT  
connection, red color,  
2-3/4" dia. , Scale for  
R410A, °F, psi, KPA.



**CH-240L**  
Low side 30 vacuum  
to 250psi, 1/8" NPT  
connection, blue color,  
2-3/4" dia. , Scale for R22,  
R12, R134A, R404A,  
°C, psi.



**CH-240H**  
Low side 0 vacuum  
to 500psi, 1/8" NPT  
connection, red color,  
2-3/4" dia. , Scale for R22,  
R12, R134A, R404A,  
°C, psi.



**CH-340L**  
Low side 30 vacuum  
to 500psi, 1/8" NPT  
connection, blue color,  
2-3/4" dia. , Scale for R22,  
R507A, R404A, R410A,  
°C, psi.



**CH-340H**  
Low side 0 vacuum  
to 800psi, 1/8" NPT  
connection, red color,  
2-3/4" dia. , Scale for R22,  
R507A, R404A, R410A,  
°C, psi.

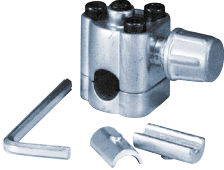


**CH-540L**  
Low side 30 vacuum  
to 350psi, 1/8" NPT  
connection, blue color,  
2-3/4" dia. , Scale  
for R507A, R407C,  
R404A, R22, R134A  
°C, psi.



**CH-540H**  
Low side 0 vacuum  
to 500psi, 1/8" NPT  
connection, red color  
, 2-3/4" dia. , Scale  
for R507A, R407C,  
R404A, R22, R134A  
°C, psi.

## CH-24 Can Top Valves



Designed for R134A and R22 small cans of Refrigerant or Oil Charge, and suitable for all refrigerant cans.

## SPV Piercing Valves



ITEM NO	O.D. TUBING SIZE
SPV31	1/4", 5/16", 3/8"
SPV21	1/2", 5/8"

## Solder Union



With 6cm or 10cm Extension copper tube  
 SU-02 1/8" O.D. SU-05 5/16" O.D.  
 SU-03 3/16" O.D. SU-05 3/8" O.D.  
 SU-04 1/4" O.D.

## Valve Core Remover



**VCR-04**  
 1/4"

## Flare cap



**CT-640-04**  
 1/4"

### Multi size solder union



**CT-7000**

for 1/8", 3/16", 1/4",  
 5/16", 3/8", 1/2" O.D.  
 tubing with valve core.

### Charging fitting



**CT-628-04**

1/4" x 1/4" flare  
 with valve core.



**CT-627-04 x 02**

1/4" x 1/8" NPT

**CT-627-04 x 04**

1/4" x 1/4" NPT

with valve core.

### Charging Adapter Kit

**CH-138**  
**Auto charging  
 adapters,  
 connector &  
 hoses kit**

complete  
 kit blister  
 packing on  
 a card.

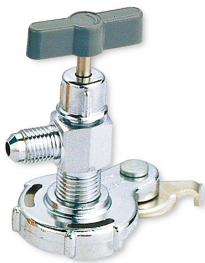


**CH-135**  
**Auto  
 charging  
 adapters &  
 hoses kit**

complete kit blister  
 packing on a card.



### CH-340 Can Top Valves



Suitable for any flat or  
 screw type Cans; 1/4"  
 SAE outlet connection.

### CH-339 Can Top Valves for 134A



Design for Cans with  
 12mmx1.5mm Thread;  
 10mm outlet connection.

### CH-338 Can Top Valves for R12

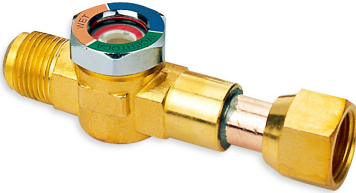


Design for Cans with  
 12mmx1.5mm Thread;  
 1/4" SAE outlet connection.

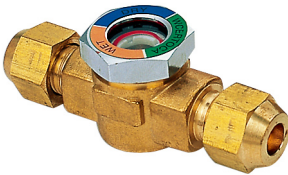
## Sight Glass



	Solder Type	
CT-802-04	1/4"	Extended Tube
CT-802-06	3/8"	Extended Tube
CT-802-08	1/2"	Extended Tube
CT-802-10	5/8"	Extended Tube

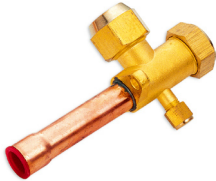


	Male	Female
CT-803-04	1/4"	1/4"
CT-803-06	3/8"	3/8"
CT-803-08	1/2"	1/2"
CT-803-10	5/8"	5/8"



Double Flare ITEM NO.	Tube O.D.	
CT-800-04C	1/4"	With Two Nuts
CT-800-06C	3/8"	With Two Nuts
CT-800-08C	1/2"	With Two Nuts
CT-800-10C	5/8"	With Two Nuts

## Split A/c Valve



ITEM NO	Tube	Connection thread
AV-1A	1/4"	7/16"
AV-2A	3/8"	5/8"
AV-3A	1/2"	3/4"
AV-4A	5/8"	7/8"
AV-5A	3/4"	1-1/16"



ITEM NO	Tube	Connection thread
AV-1B	1/4"	7/16"
AV-2B	3/8"	5/8"
AV-3B	1/2"	3/4"
AV-4B	5/8"	7/8"
AV-5B	3/4"	1-1/16"





www.sino-hvac.com  
 hvac@sinochem-nb.com  
 Tel. 86 574 87348868  
 Fax. 86 574 87364863

Copper Tube  
 AC installation  
 AC Parts  
 Compressor



2011 A/C Catalogue

## Hand Valve Solder



- CT-S-04-1/4"
- CT-S-06-3/8"
- CT-S-08-1/2"
- CT-S-10-5/8"
- CT-S-12-3/4"

## Hand Valve Flare



- CT-D-04-1/4"
- CT-D-06-3/8"
- CT-D-08-1/2"
- CT-D-10-5/8"
- CT-D-12-3/4"

