

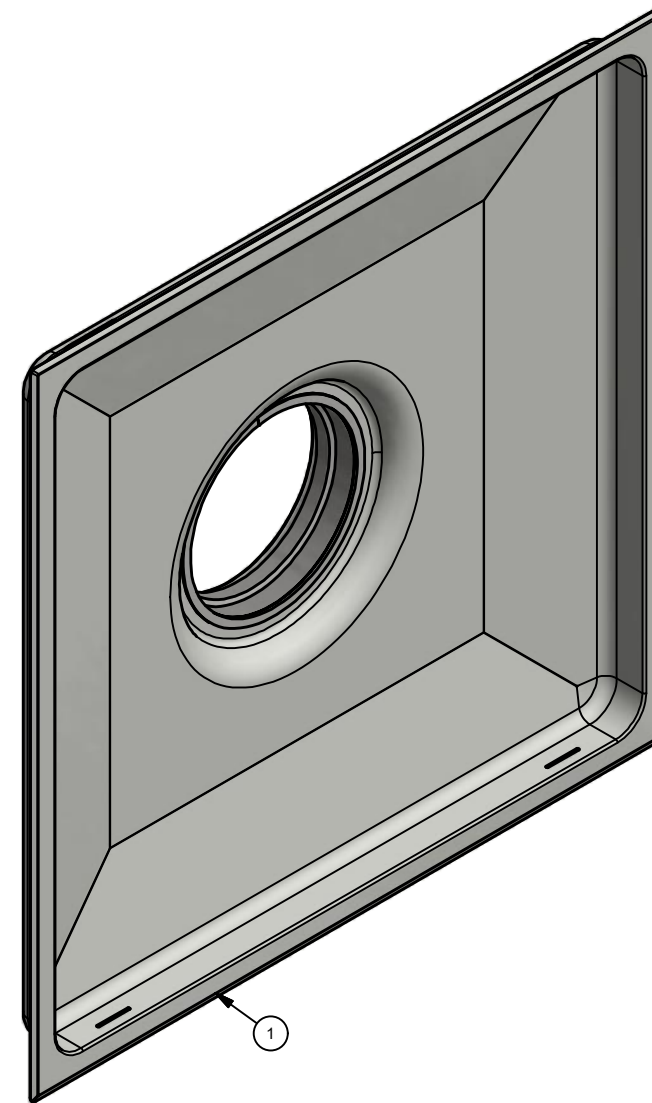
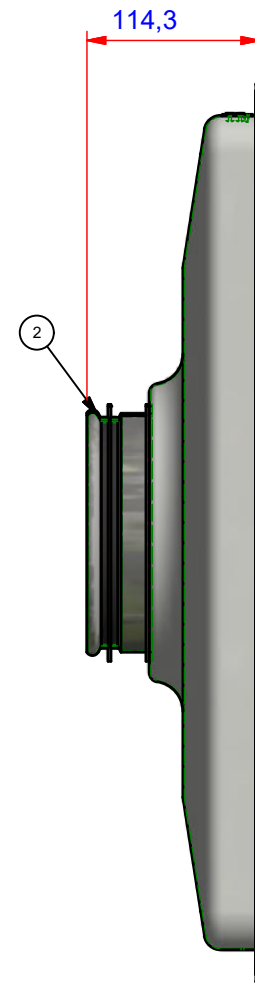
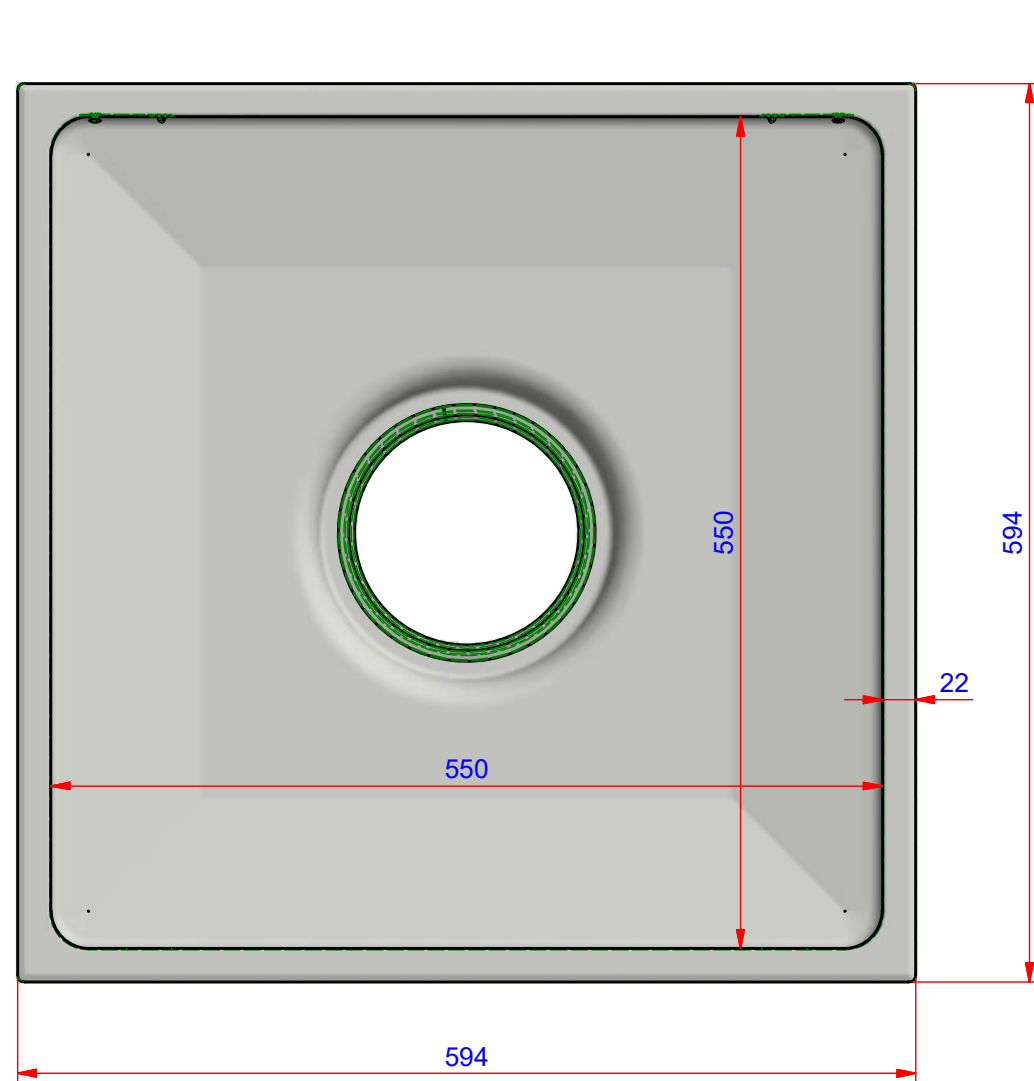
This drawing is protected by law of copyright and must not be copied or made use of without permission of Infotech\_Kin. 26.04.2018 PM. O: infotechproject.pl, 2018, 18042512VE, VE-18-012, Koncówka wylotu/KW-01-110.dwg

ITM	QTY	PART NUMBER	DESCRIPTION	MATERIAL	MASS
1	1	KW-01-111	Punch plate	Steel	2,5 kg
2	1	KW-01-112	Przylacze	Stainless Steel	0,4 kg
3	1	KW-01-113		Steel	0,0 kg
4	1	KW-01-114		Steel	0,0 kg
5	4	Rivet GB/T 1014-1986-2 X 4	Truss head semi - tubuar rivets	Steel, Mild	0,0 kg

Odchyłki graniczne wymiarów nietolerowanych ISO 2768-1

klasa m EN 22768-1

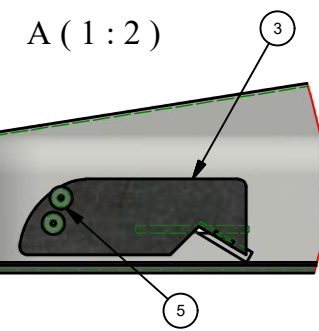
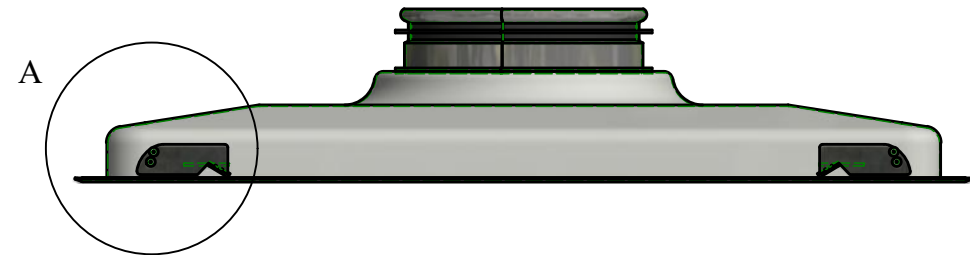
ponad	do	Odchyłka
0,5	3	±0,1
3	6	±0,1
6	30	±0,2
30	120	±0,3
120	400	±0,5
400	1000	±0,8
1000	2000	±1,2
2000	4000	±2



**Quantity: 1 PCS**

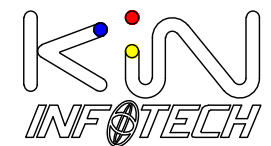
Description:

PIECES	
DRAWING COLOR - RAL	MASS 2,9 kg
DRAWING MATERIAL	
DRAWING NAME KW-01-110	
Tolerance ISO 2768-1-m	
CLIENT VE	REVISION
PROJECT Koncówka wylotu	
PROJECT NO VE-18-012	DATE 26.04.2018
PROJECT MANAGER	PROJECTION 
DRAWN BY PM	SIZE SHEET A3 1 / 1



ORDER NUMBER  
**18042512VE**

DRAWING NO  
VE-18-012-KW-01-110-1



www.kin-kin.eu  
info@infotech-color.pl  
REGON 220353047, NIP 842-16-66-806  
+48 695 416 684  
Wygoda 11, 77-124 Parchowo