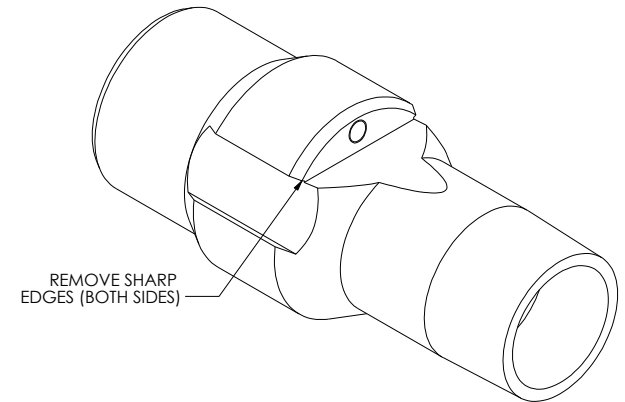
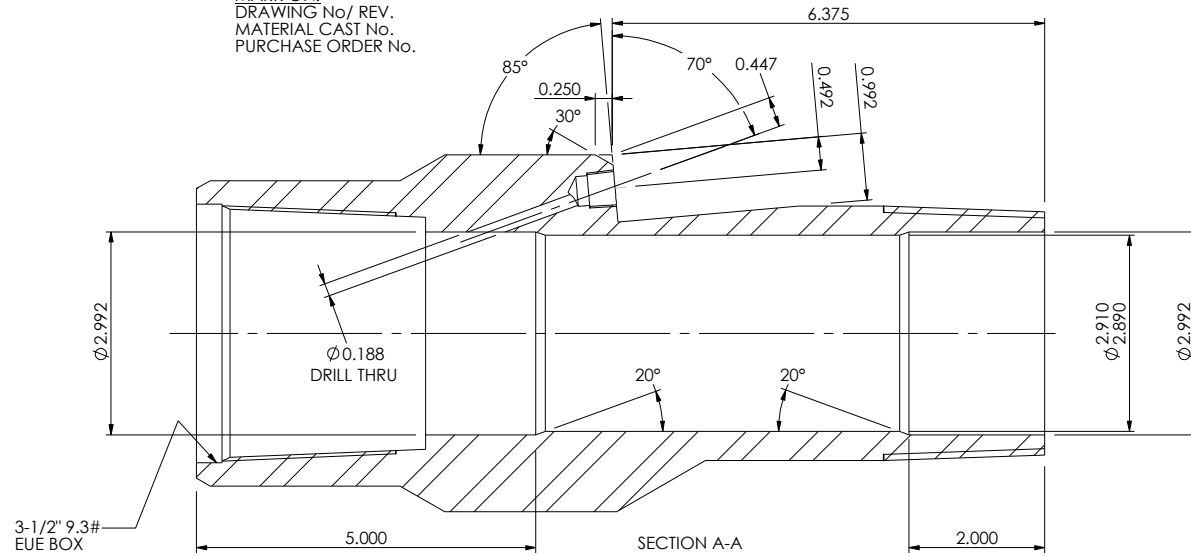


MARK ON:  
DRAWING No/ REV.  
MATERIAL CAST No.  
PURCHASE ORDER No.



- NOTES:
1. GLASS BEAD BLAST BOX THREAD AND COPPER COAT
  2. BEAD BLAST PIN THREAD
  3. DRIFT TO  $\phi 2.867$  API
  4. FIT THREAD PROTECTORS

D					MATERIAL	FINISH	MACHINING PARAMETERS (U.O.S)	TITLE:		
C					AISI 420 13CR S <sub>t</sub> S <sub>t</sub> NACE	SEE NOTES...	LINEAR DIMS: X.XXX ± .005 (.13) / X.XX ± .015 (.38)	DISCHARGE PRESSURE SUB		
B					MR0175 80KSI MIN YIELD 22HRC		X.X ± .03 (.8) / OTHERWISE ± 0.250			
A					MAX	MASS	ANGULAR DIMS: ± 0-30°			
REV.	DRAWNBY	ECN No	DATE	CHECKEDBY	COMPLIES WITH GE MATERIALS SPECIFICATION D50A159	25.347 lbs	SURFACE FINISH: 125 Micro Inch CLA	SHEET SIZE		
REVISIONS							HOLE POS TOL: 0.005" OF TRUE POSITION	DRAWING / PART NUMBER:		
							ALL UNSPECIFIED ANGLES TO BE 45°	A3-C		
							REMOVE BURRS AND SHARP EDGES	21480001402		
							DIMENSIONS INCLUDE APPLIED FINISHES	SHT 1 OF 1		
								REV D		