

CONFORMS TO BS 8888
IF IN DOUBT ASK

2

3

4

THIRD ANGLE PROJECTION

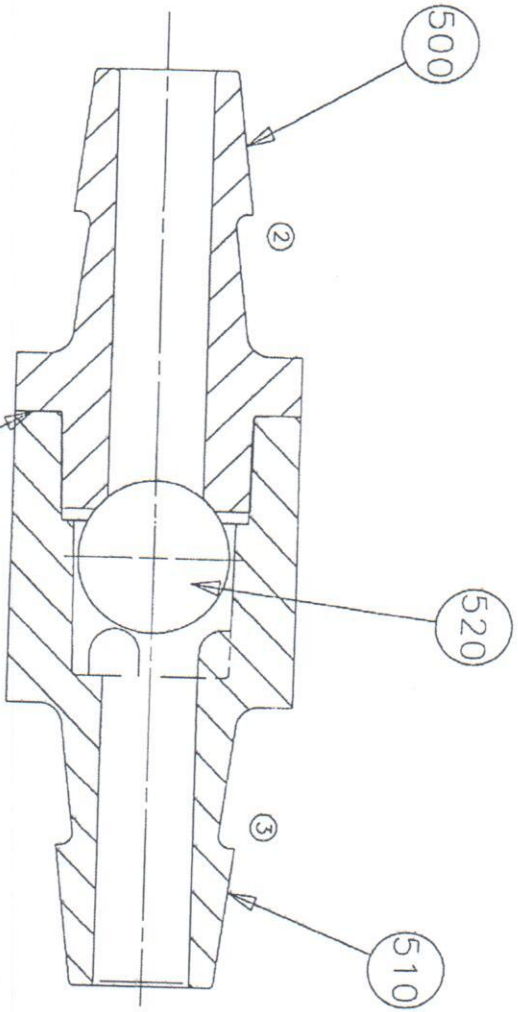
5

6

7

1	IN. GATE	5.001E	1550E
2	ITEM NO	31	1550E
3	DATE	15/07/00	1550E
4	BY	15/07/00	1550E
5	CHKD	15/07/00	1550E
6	APP'D	15/07/00	1550E
7	REV	15/07/00	1550E
8	REV	15/07/00	1550E
9	REV	15/07/00	1550E
10	REV	15/07/00	1550E

SECTION THROUGH NON RETURN
VALVE ASSY



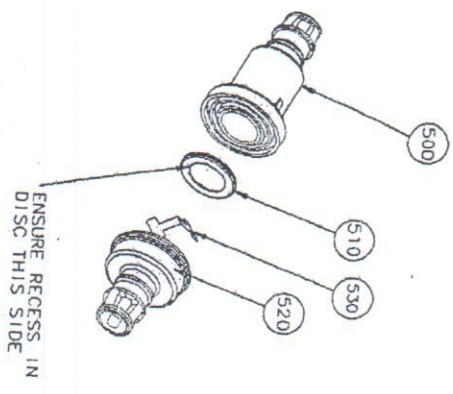
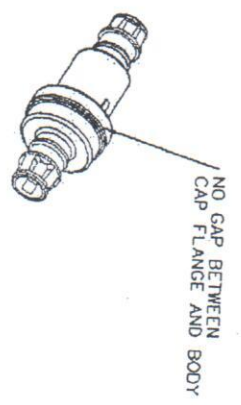
ULTRASONIC WELD ITEMS 500 & 510
TOGETHER ON THIS MATING FACE ONLY

CONTRACT NO. 33-00000-01-00000-01
REV. 10/19/64

① ② ③ ④ ⑤ ⑥ ⑦

REV.	DATE	BY	CHKD.	DESCRIPTION
1	10/19/64
2
3
4
5
6
7

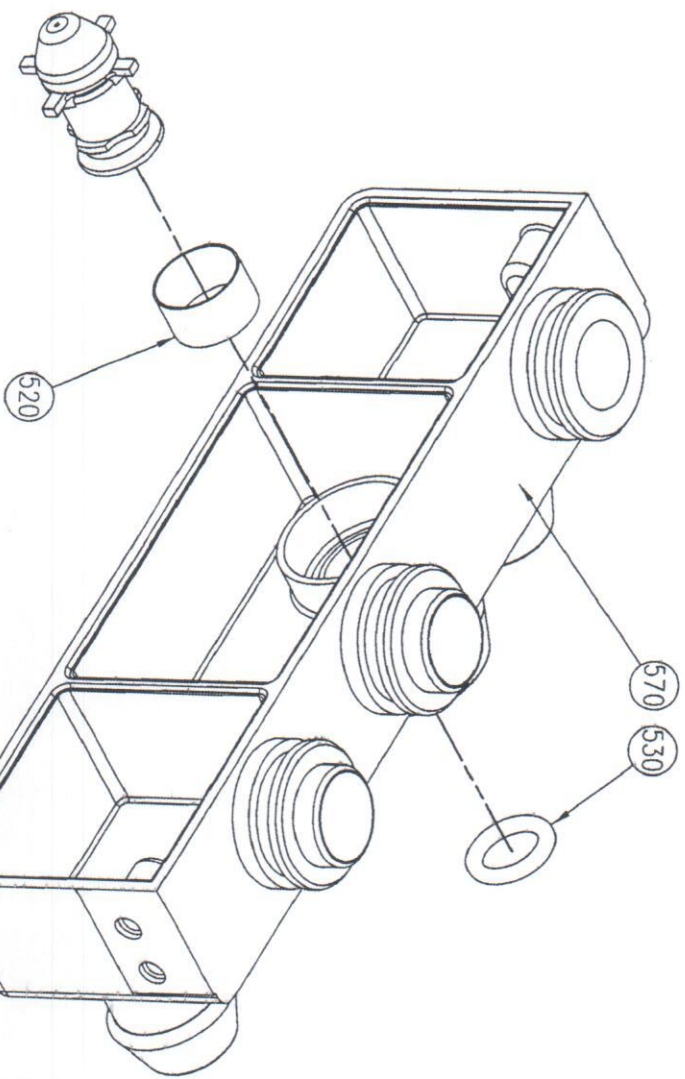
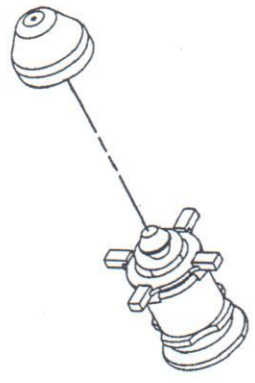
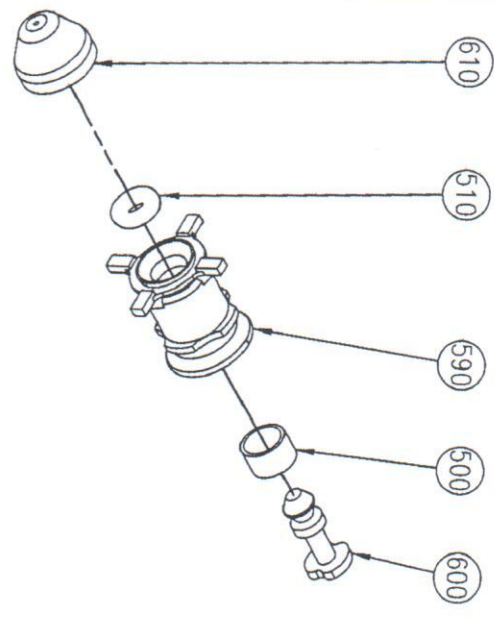
MASTER
IF PD



NOTES:
ENSURE ALL PARTS ARE
CLEAN & FREE OF DEBRIS
PRIOR TO ASSEMBLY
ITEM 500 ULTRASONICALLY
WELED TO ITEM 520
ITEM 510 TO BE FREE MOVING
AFTER WELDING

MASTER IF RED

CONFORMS TO BS 308
IF IN DOUBT ASK



NOTES:-- 1/ PROTECTIVE FINISH,
FINISH TO BE AS MOULDED BUT WHEN ADDITIONAL
PROCESSES ARE APPLIED ALL EDGES & SURFACES
TO BE CLEAN, BURR & DEBRIS FREE.

2/ ASSEMBLY STAGE 1. CENTRAL VALVE
AFTER ASSEMBLY of ITEMS 500, 510, 590 & 600
ITEM 610 is to BE ULTRASONICALLY WELDED
CENTRALLY to ITEM 590.

3/ ASSY STAGE 2. FITTING of CENTRAL VALVE
DETAILS ON SHEET 2

THIRD ANGLE PROJECTION

IN.	DATE	C.	NOTE	ISSUE
DR.	APPROV.	PLANT	EDWARDS	1
REVISED	BY	DATE	REASON	