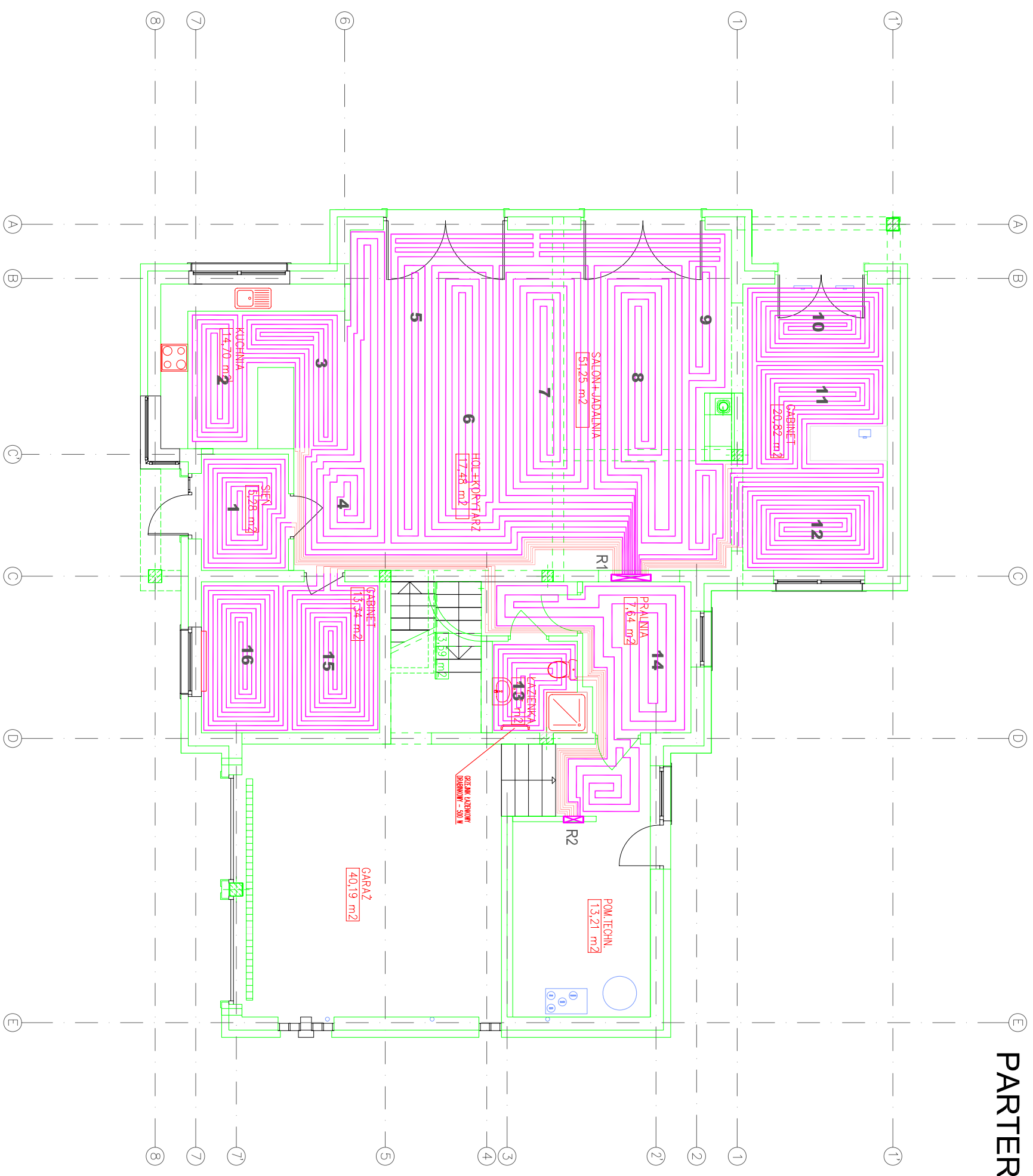


# PARTER



OBIEGI GRZEWCZE:

1	480 W	B= 10cm	L= 46+17m
2	420 W	B= 10cm	L= 40+21m
3	420 W	B= 10cm	L= 40+20m
4	580 W	B= 15cm	L= 74 m
5	550 W	B= 15cm	L= 70 m
6	620 W	B= 15cm	L= 80 m
7	620 W	B= 15cm	L= 82 m
8	640 W	B= 15cm	L= 82 m
9	570 W	B= 15cm	L= 73 m
10	340 W	B= 10cm	L= 60+ 8m
11	370 W	B= 10cm	L= 62+ 5m
12	370 W	B= 10cm	L= 62+ 5m
13	250 W	B= 10cm	L= 30+ 9m
14	1020 W	B= 20cm	L= 63 m
15	390 W	B= 10cm	L= 65+ 16m
16	400 W	B= 10cm	L= 67+ 17m