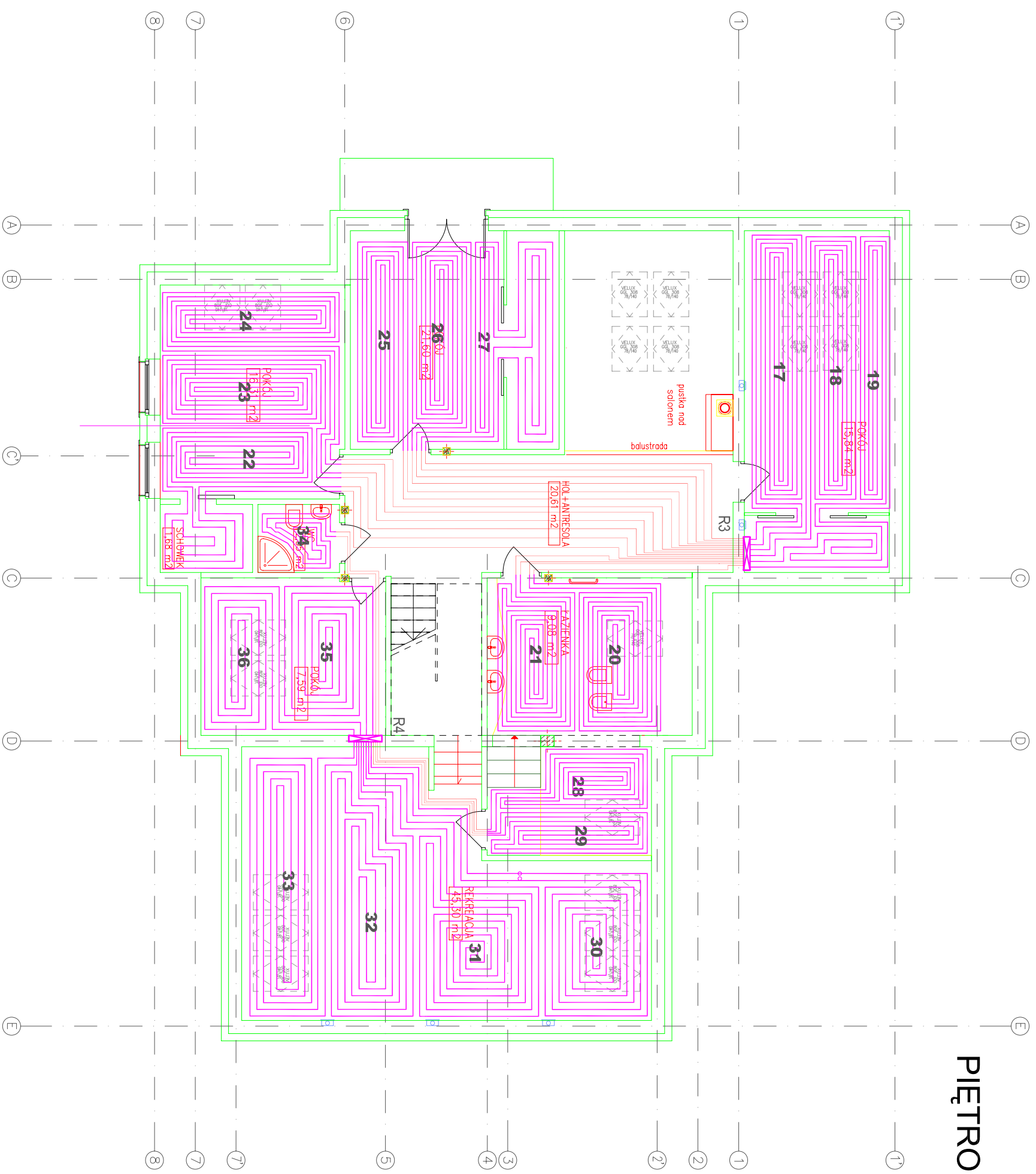


PIĘTRO



OBIEGI ORZEWCZE:

17	410 W	B= 10cm	L= 74 m
18	420 W	B= 10cm	L= 75 m
19	390 W	B= 10cm	L= 70 m
20	760 W	B= 10cm	L= 62+ 9m
21	470 W	B= 10cm	L= 60+ 10m
22	520 W	B= 10cm	L= 66+ 20m
23	360 W	B= 10cm	L= 64+ 20m
24	350 W	B= 10cm	L= 62+ 21m
25	300 W	B= 10cm	L= 54+ 20m
26	330 W	B= 10cm	L= 60+ 19m
27	320 W	B= 10cm	L= 57+ 18m
28	330 W	B= 10cm	L= 42+ 9m
29	310 W	B= 10cm	L= 39+ 9m
30	480 W	B= 15cm	L= 66 m
31	510 W	B= 15cm	L= 70 m
32	490 W	B= 15cm	L= 68 m
33	500 W	B= 15cm	L= 69 m
34	120 W	B= 10cm	L= 15+ 10m
35	310 W	B= 15cm	L= 43 m
36	320 W	B= 15cm	L= 44 m