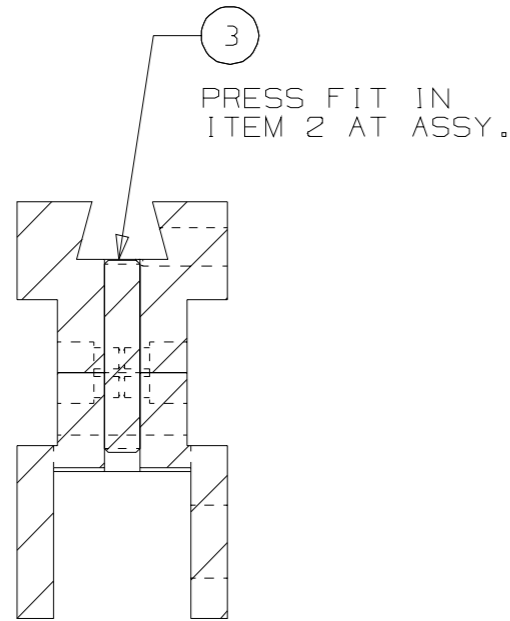


848334835

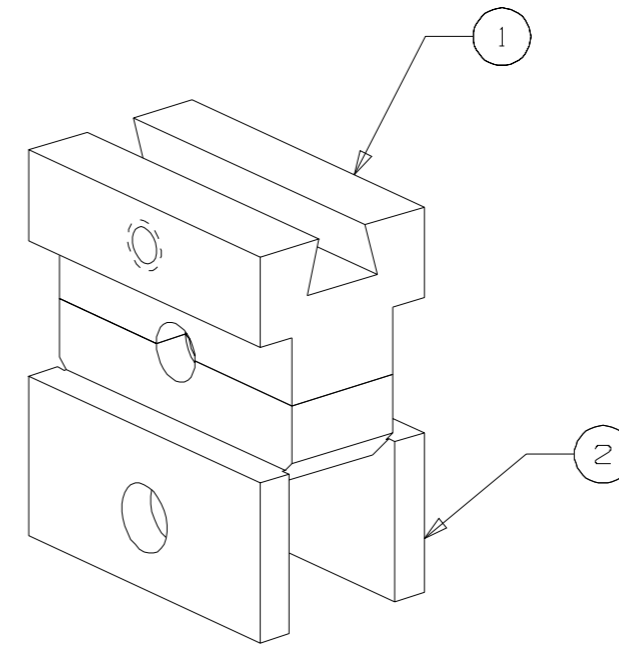
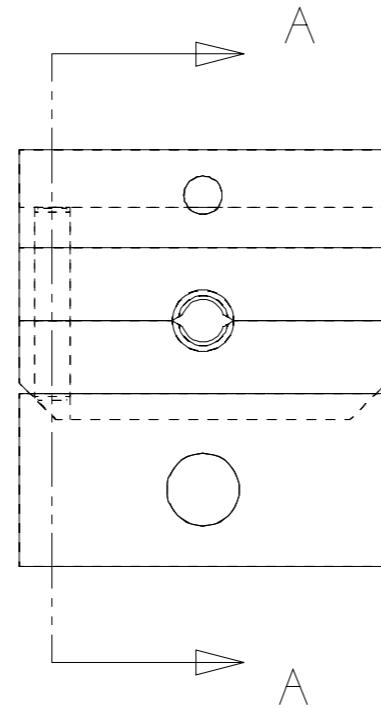
|          |             |         |     |
|----------|-------------|---------|-----|
| ENGR     | M. DOBSON   | MD      |     |
| DRAWN    | LV LAWRENCE | LVL     | DDD |
| 03-10-99 |             | ISSUE 1 |     |

NOTES:

1. THE GEOMETRY OF THIS PART HAS BEEN CREATED USING UNIGRAPHICS AND IS STORED IN THE ATLANTA UNIGRAPHICS VAULT.



SECTION A-A



|     |           |   |      |
|-----|-----------|---|------|
|     |           |   | 6    |
|     |           |   | 5    |
|     |           |   | 4    |
| 1   |           | DOWEL PIN $\phi$ .0938" X 0.5" LG STAINLESS | 3    |
| 1   | 848334850 | LC CRIMPER LOWER JAW                        | 2    |
| 1   | 848334843 | LC CRIMPER UPPER JAW                        | 1    |
| REQ | IDENT NO. | DESCRIPTION                                 | ITEM |

STOCKLIST

UNLESS OTHERWISE SPECIFIED, ALL DIMENSIONS ARE IN INCHES. NONLIMITED DIMENSIONS OTHER THAN SIZE OF RAW MATERIAL SHALL BE HELD AS FOLLOWS WHEN EXPRESSED:  
 TO 2 DECIMAL PLACES  $\pm$  AS ANGLES  $\pm$   
 TO 3 DECIMAL PLACES  $\pm$   
 THIS ENGLISH DRAWING HAS BEEN PREPARED IN ACCORDANCE WITH ANSI Y14.5M-1982  
 DIMENSIONS SHOWN IN BRACKETS [ ] ARE MILLIMETERS AND FOR REFERENCE.  
 B- PARTIAL ASSEMBLY ON DRAWING WITH STOCKLIST  
 ✓ - QUANTITY AS REQUIRED.

USED ON DRAWING

Lucent Technologies  
 PROPRIETARY  
 Use pursuant to  
 Company instructions

APPARATUS-EQUIPMENT

LC CRIMPER  
 DIE ASSEMBLY

SCALE 2/1

DWG  
 SIZE  
 25

848334835