



Company

We are a family company that we are producing moulded pulp of paper since 1972.
We build our machines also.

We are growing slowly through the years.

DECAPULP begins to produce cushioning trays or bottles.

Actually we are producing different products for industry, alimentary and sanitary branch.

We work with clients around Europe.

DECAPULP is a moulded pulp manufacturer, we can supply you an integral service, design whole packaging, including the production and distribution of the moulded pulp articles.

In our process we can use diverse kinds of raw materials, producing a several sizes and forms.

We can supply you the products with after-press and cutting end finish, depending of the needs

of the product to pack.

We can provide you a lot of standard products also.

Cellulose Types

The raw material of our articles is recovered of paper. During their elaboration we adds only ecological additives considered environmental.

The result is a product:

- Recycled
- Recyclable
- Biodegradable

Moulded Pulp Products DECAPULP has different kinds o moulded pulps:

USUALPULP

Smallest product 150 x 100 x 10 mm with a thickness of 1 mm,

Maximum dimensions articles of 600 x 400 x 150 mm with a thickness of 2.5 mm

High production, more than 5.5 million units per month.

84 models with 336 molds for 186 different items.

Usual packed products champagne bottles, eggs, apples, tomatoes, melons, pears...



HARDPULP

Minimum dimensions products 200 x 150 x 20 mm with a thickness of 2 mm,

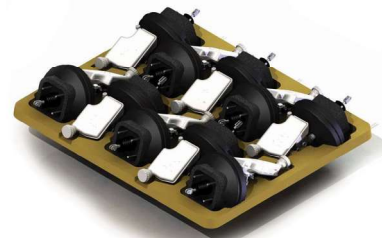
Maximum dimensions product 1175 x 1000 x 250 mm and a thickness of 5 mm.

16 tons daily production.

Technical product made in special cells.

Items of great strength and deformation control.

Usual packed products special bottles, televisions, boxes, trays automotive, appliances ...



QUALITYPULP

Cellulose thermoformed.

Smallest product 60 x 50 x 5 mm thickness of 0.5 mm.

Maximum dimensions product 600 x 400 x 120 mm 1.5 mm thick.

Short tolerances, since 0.2%.

The both faces have a smooth finish.

Ideal for containing phone, cosmetics, small appliances, food, electronics ...



USUALPULP Standard Products

Product Description	Holder tray paper pulp moulded made for plastic boxes, with different number of spherical holes depending of their diameter to hold spherical fruits.		
Dimension mm. \pm 3 mm	285x385		
Weight g \pm 5 g	45		
Thickness mm \pm 0,25 mm	2		
Raw material	60% Newspaper, 40% magazine and carton.		
Colorants	Alimentary Ink.		
Alimentary Registrations	RGS: 39-01793-B / RSIPC: 39-04600/CAT		
Palette Dimensions	120 x 80 x 245 cm. With 25 Packets of 250 trays.		
N° of fruits for box	Weight of Fruit g.	N° of fruits for tray	Units Palette
M-4	1100-1300	4	6250
M-5	950-1100	5	6250
M-6	800-950	6	6250
M-7	650-800	7	6250
M-8	550-650	8	6250
2M-9	400-550	9	7500



Available Colours
Natural (Without colorants).
Possibility of others colours under demand.

Product Description	Holder tray paper pulp moulded made for plastic boxes, with different number of spherical holes depending of their diameter to hold spherical fruits.		
Dimension mm. \pm 3 mm	385x585		
Weight g \pm 5 g	105		
Thickness mm \pm 0,25 mm	2		
Raw material	60% Newspaper, 40% magazine and carton.		
Colorants	Alimentary Ink.		
Alimentary Registrations	RGS: 39-01793-B / RSIPC: 39-04600/CAT		
Palette Dimensions	120 x 80 x 247 cm. With 24 Packets of 130 trays.		
N° of fruits for box	Weight of Fruit g.	N° of fruits for tray	Units Palette
M-9	(+) 1300	9	3120
M-11	1100-1300	11	3120
M-12L	950-1100	12	3120
M-12Q	800-950	12	3120
M-14	700-900	14	3120
M-15L	650-800	15	3120
M-15Q	600-700	15	3120
M-16	550-650	16	3120
M-18	400-550	18	3120



Available Colours:
Natural (Without colorants), Salmon and Green.
Possibility of others colours under demand.

USUALPULP Standard Products

Product Description	Holder tray paper pulp moulded made, with different number of spherical holes depending of them diameter.			
Dimension mm. \pm 3 mm	380x580			
Weight g \pm 5 g	80			
Thickness mm \pm 0,25 mm	2			
Raw material	60% Newspaper, 40% magazine and carton			
Colorants	Alimentary Colorant			
Alimentary Registrations	RGS: 39-01793-B / RSIPC: 39-04600/CAT			
Palette Dimensions	120 x 80 x 240 cm. With 36 Packets of 135 trays.			
® Reversible	N° fruits for tray	Dimensión fruit Ømm	N° fruits for box with two flors	Units for Pallette
®	25	83-94	50	4860
	27	79-87	55	4860
	28			4860
®	30	77-84	60	4860
	31	78-85	63	4860
	32/63			4860
	32/65	75-82	65	4860
	33			4860
®	35	73-82	70	4860
	36A	72-78	72	4860
	36B			4860
®	36	72-78	72	4860
	37	70-79	75	4860
	38			4860
®	39	68-78	79	4860
	40	69-76	82	4860
	41			4860
	42A	68-76	84	4860
	42B			4860
®	45	67-75	90	4860
	48A	65-71	-	4860



Available Colours:
Colours Natural
(Without colorants)
and Blue.

(®) Reversible

USUALPULP Standard Products

Product Description	Holder tray paper pulp moulded made for plastic boxes, with different number of spherical holes depending of their diameter to hold spherical fruits.
Dimension mm. \pm 3 mm	360x560
Weight g \pm 5 g	75
Thickness mm \pm 0,25 mm	2
Raw material	60% Newspaper, 40% magazine and carton
Colorants	Alimentary Ink.
Alimentary Registrations	RGS: 39-01793-B / RSIPC: 39-04600/CAT
Palette Dimensions	120 x 80 x 240 cm. With 36 Packets of 135 trays



Available Colours:
Natural (Without colorants), green and Blue. Possibility of others colours under demand.

®	Nº fruits for box	Dimensión fruits Ømm	Nº Fruits for box with two floors	Units for Pallette
®	V-22	92-98	44	4860
®	V-25	83-90	50	4860
	V-27	79-87	55	4860
	V-28			4860
®	V-30	77-84	60	4860
	V-32	75-82	65	4860
	V-33			4860
®	V-35	73-82	70	4860
	V-37	70-79		4860
	V-38			4860
®	V-39	68-78	78	4860
	V-42	68-75	84	4860
®	V-45	66-72	90	4860

(®) Reversible

HARDPULP Standard Products

Molded pulp pallet: 80x120 PALETpulp



Plan view

Made of molded pulp type HARDPULP

- Ecological
- Recycling
- Recyclable
- Biodegradable



Bottom view

The burden should be spread and compacted.

Totally closed to protect the load.



Stacking

You can stack and storage space is gained.

The charges must be performed inside a warehouse store, do not let the weather.



Column

Economic

Deliveries in columns 30+1 unit (pallet bottom without charge)

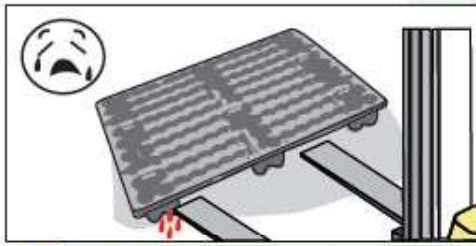
Easy to pack with shrink film, thanks to its outgoing contour.



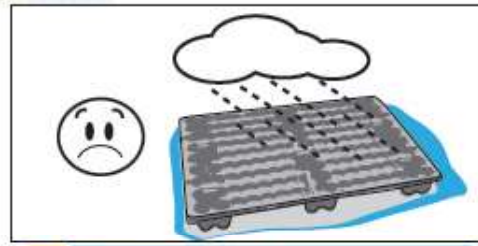
Product Description	PALETpulp 80x120
Dimension Palette (mm. \pm 3 mm)	800 x 1175 x 150
Weight Kg \pm 2%	2,5
Thickness mm \pm 0,25 mm	5
Static load (Kg)	1500
Dynamic load (Kg)	300
Temperature Maximum / Minimum	+60°C / -10°C
Stack	Embedded
Entries	2
Dimensions Palette	800x1200 30+1 units

HARDPULP Standard Products

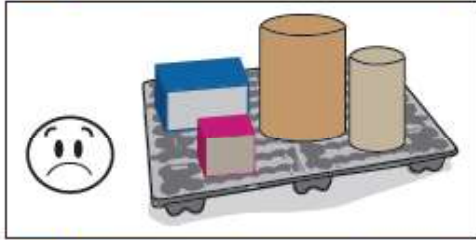
80x120 PALETpulp (Tips and Recommendations)



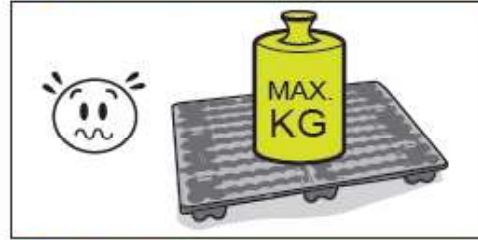
Cat No fer mal
Es No dañar
En No damage



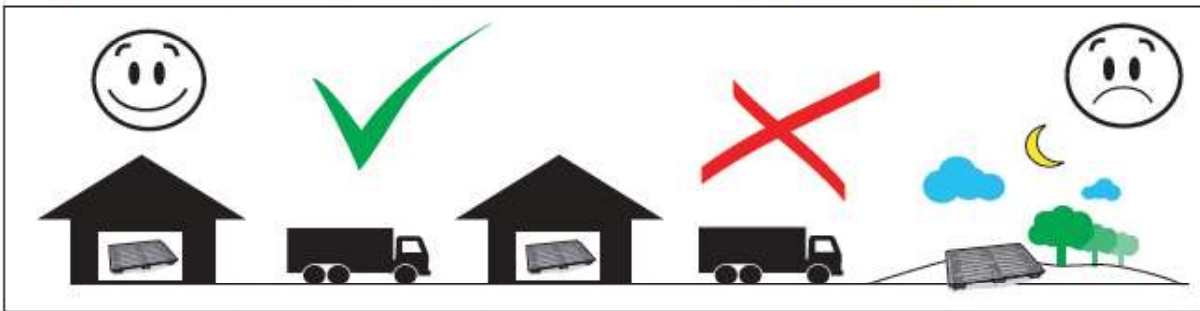
Cat No exposar a la pluja
Es No exponer a la lluvia
En Do not expose to rain



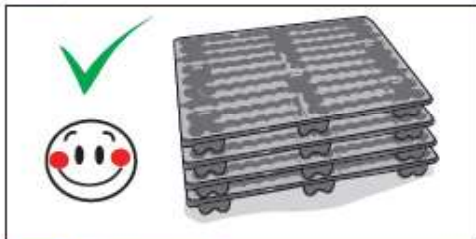
Cat No col·locar paquetaje desigual
Es No colocar paquetaje desigual
En Do not place unequal paquetaje



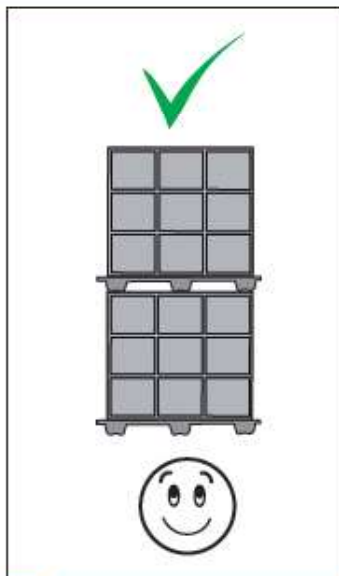
Cat No sobrecarregar
Es No sobrecargar
En Do not overload



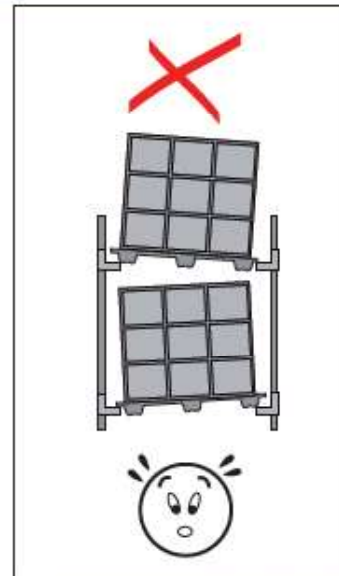
Cat Càrregues de magatzem a magatzem, no deixar a l'exterior
Es Cargas de almacén a almacén, no dejar en el exterior
En Uploads from warehouse to warehouse, not let outside



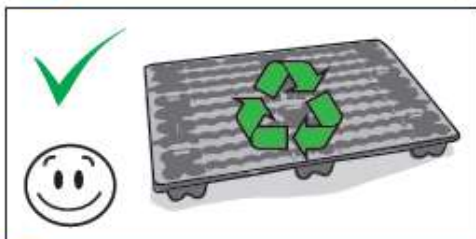
Cat Es poden apilar
Es Se pueden apilar
En Can be stacked



Cat Paquetaje uniforme, bon apilament en columna
Es Paquetaje uniforme, buen apilamiento en columna
En Paquetaje uniform, good column stacking



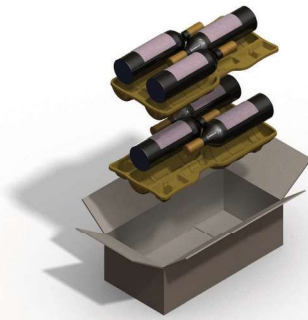
Cat No col·locar sobre RAKS
Es No colocar sobre RAKS
En Do not place over RAKS



Cat Ecològic, reciclat, reciclable i biodegradable
Es Ecológico, reciclado, reciclable y biodegradable
En Ecological, recycling, recyclable and biodegradable

HARDPULP Standard Products

Trays moulded pulp autoportables bottle of wine, V-3/1A, V-3/1B.



Overview

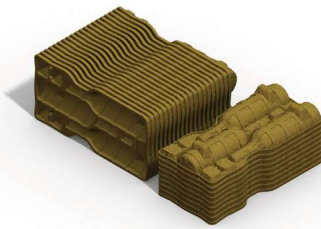
Cells made molded pulp type HARDPULP

- Ecological
- Recycling
- Recyclable
- Biodegradable



Packing system

1. Packing box (Insidel dimensions 455 x 225 145 mm.)
2. Locate V3/1A lower tray
3. Place 3 winw bottles
4. Locate top V3/1B tray
5. Place remainder of bottle
6. Close the carton.



Stacking

- The trays are fully stackable for save space in transport and storage.

Deliveries in columns

- Deliveries are made in 2 columns 1.600 units (with a ref. V-3/1A and another with ref. V-3/1B) on pallet 1.200 x 900 mm. a height of 2.350 mm. and protected with film shrink.



Product Description	V-3/1A (BOTTOM) V-3/1B (TOP)
Dimension mm. ± 3 mm	450 x 220 x 55
Weight g ± 2%	110
Thickness mm ± 0,25 mm	2,5
Embedded	Stack
Dimensions Pallet	1200x900x2350 1600 UNITS

HARDPULP Standard Products

Molded pulp trays pharmacological products

Pharmacological 10 Bottles of 50 ml.



Product Description	50 ml - TOP 50 ml - BOTTOM
Dimension mm. ± 3 mm	302 x 124 x 22 (TOP) 302 x 124 x 35 (BOTTOM)
Weight g ± 2%	40 (TOP) 48 (BOTTOM)
Thickness mm ± 0,25 mm	2,5
Embedded	Stack
Dimensions Pallet	1200 x 800 x 1050
Units en Pallet	1174 UNITS - TOP 1005 UNITS - BOTTOM

Pharmacological 10 Bottles of 100 ml.



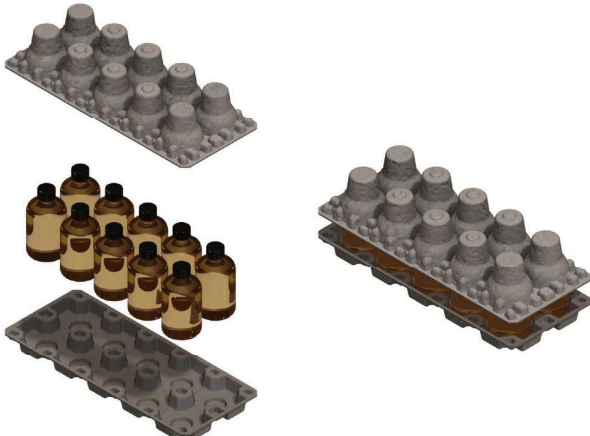
Product Description	100 ml - TOP 100 ml - BOTTOM
Dimension mm. ± 3 mm	316 x 136 x 49 (TOP) 316 x 136 x 35 (BOTTOM)
Weight g ± 2%	70 (TOP) 56 (BOTTOM)
Thickness mm ± 0,25 mm	2,5
Embedded	Stack
Dimensions Pallet	1200 x 800 x 1050
Units en Pallet	645 UNITS - TOP 940 UNITS - BOTTOM

Pharmacological 5 Bottles of 125 ml.



Product Description	125 ml
Dimension mm. ± 3 mm	152 x 152 x 36
Weight g ± 2%	20
Thickness mm ± 0,25 mm	2,5
Embedded	Stack
Dimensions Pallet	1200 x 800 x 1050
Units on Pallet	1560 UNITS

Pharmacological 10 Bottles of 250 ml.



Product Description	250 ml - TOP 250 ml - BOTTOM
Dimension mm. ± 3 mm	418 x 173 x 75 (TOP) 418 x 173 x 35 (BOTTOM)
Weight g ± 2%	125 (TOP) 90 (BOTTOM)
Thickness mm ± 0,25 mm	2,5
Embedded	Stack
Dimensions Pallet	1200 x 800 x 1050
Units on Pallet	400 UNITS - TOP 460 UNITS - BOTTOM

Some projects.

Electrical and electronics sector

PHILIPS

SAMSUNG

SANYO

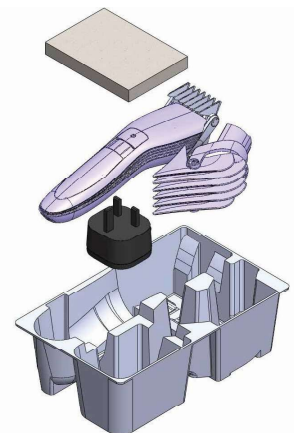
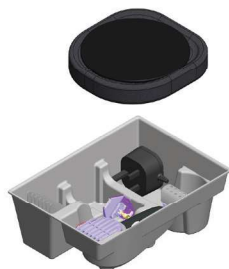
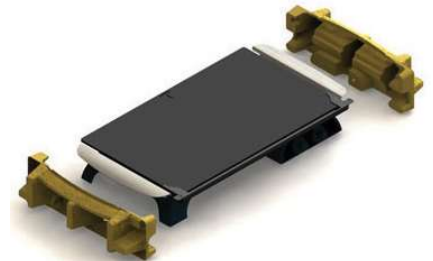
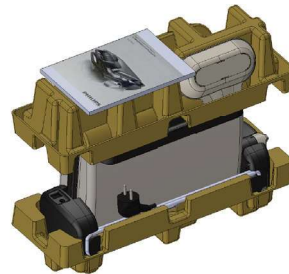
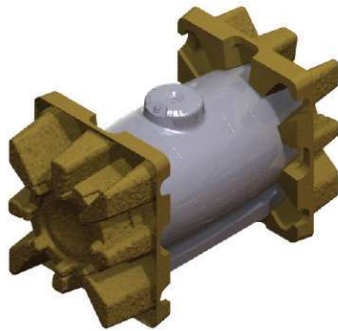
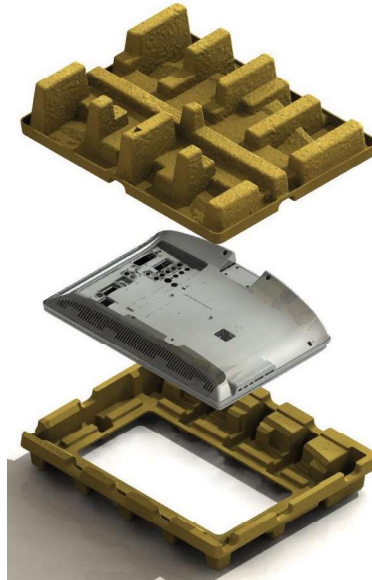
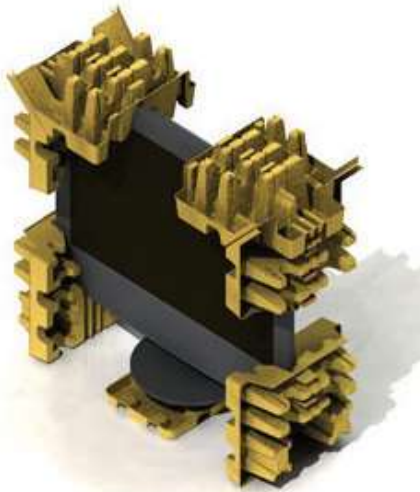
SHARP



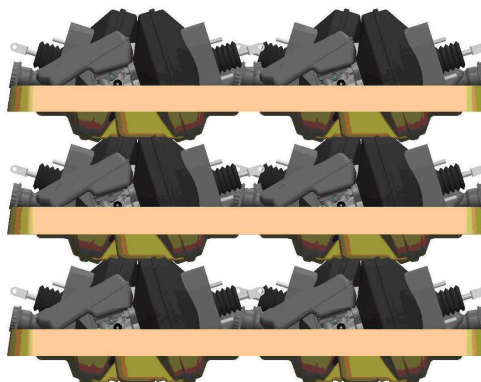
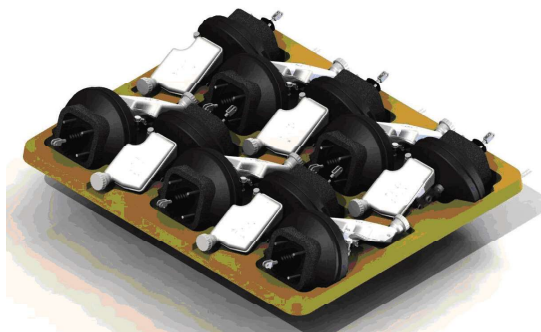
SONY

teltronic

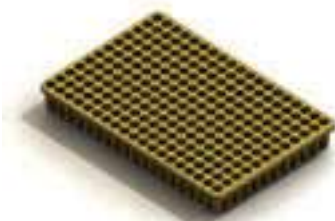
lata
electro



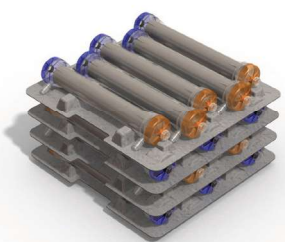
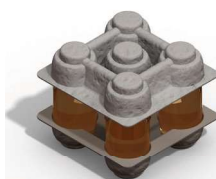
Automotive Sector



General Industry Sector



Hospital sector and chemical





Ctra. C-16. km.90,5
Colònia Ametlla
08693 CSSERRES -Barcelona-
Tel.: +34 938 228 335
Fax: +34 938 228 869
www.decapulp.com